



cosmo²

COSMO 2 is the new semi-automatic cleaning filter produced by **ECOTERM**, from over 30 years experience in the water treatment field, accomplished with the best technologies and the best materials currently available.

THE WATER FILTERING IMPORTANCE IN A DOMESTIC WATER SUPPLY PLANTS

The importance of a correct and efficient water filtration for the good functionality of a domestic water supply plants and its components is almost a requirement knowledge for the designer, installer and plants owner.

However not many people know that a well done filtration could give also remarkable advantages as:

- ✓ longer life of the plants components;
- ✓ longer life and domestic devices improved performance;
- ✓ pipes and corrosion protection from all the solid particles, iron flakes and materials that detach from the pipes and transported by the water flow.



cosmo²



ECOTERM S.n.c.

Via Veneto, 20 - 35044
Montagnana (PD) - Italy

T +39 0429 81158
F +39 0429 800590
info@ecotermitaly.it

www.ecotermitaly.com



ECOTERM and **COSMO 2** are registered trade marks of ECOTERM Water Solutions. Unauthorized use of the registered trade marks is strictly forbidden and legally persecuted. Images and texts are property of Ecoterm Water solutions.

cosmo²

— ADVANCED CLEANING FILTER —



SEMI-AUTOMATIC CLEANING FILTER FOR DRINKABLE WATER



WORKING PRINCIPLES

The cleaning of the filter cartridge is done by the **washing handle clockwise**. Every 90° the brushes clean the whole surface of the cartridge completely and the dirt inside the bowl will be discharge.

This system does not present the cartridge filter replacement problem with significant **economic** and **practical advantages**.



T-LAYER CARTRIDGE



CLEANING WITH CARTRIDGE BRUSHING AND DISCHARGE OF IMPURITIES

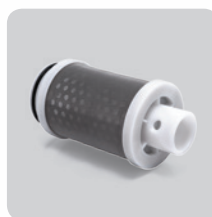
WHY OUR FILTER SYSTEM IS REALLY RELIABLE, EFFICIENT AND INNOVATIVE?

NO-DRIP system



The **no-drip system** and the dirt deposit allow for the proper working of the drainage system for the whole life of the filter, avoiding unpleasant water leaks and blockages. With this technology the drain switch from the open/close position by the rotation and will be always clean and without impurities which could compromise the correct functionality.

T-LAYER cartridge



The **90 micron filter cartridge** is formed of **3 layer**. The internal layer or the perforated supporting body serves to give support to the filtering material and strengthen the cartridge. The welding of the cartridge and its consequent uniform surface avoid dangerous stresses on the brushes and filtering mesh, concentrating the energy of the brushing on the removal of the dirt and preventing the deformation of the cylinder. The middle layer improves the water flow by functioning as a diffuser and giving support to the layer dedicated to filtering dirt. The last layer or filtering mesh fits perfectly onto the surface of the cylinder to give greater reliability. The internal steel layer inox AISI 316, steel filtering mesh inox AISI 304.

ENVISAGED USE

The filter has been made for both domestic and industrial use, for the filtration of cold water, to supply water for heating, cooling and water network processes.

MATERIALS

The filter has been made with high quality material suitable for drinking water.



Are available the filter version with plastic fittings **WITHOUT BRASS INSERTS**



HEAD
Polypropilene

FITTINGS
Brass / Plastic

BOWL
Makrolon®

CARTRIDGE
Stainless steel
AISI 304/3166

OTHER INTERNAL COMPONENTS
Acetalic resin

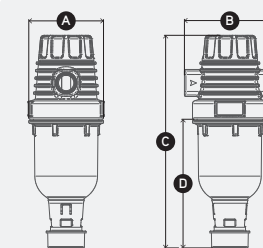
TECHNICAL DATA

FILTER TYPE	A	B	C	D
Connections	1/2" F	3/4" F	1" F	1 1/4" F
Flow rate m ³ /h (DP=0.2 bar)	3.5	5	6	7
Pressure MIN/MAX	1.5/10 bar			
Filtration my	90 micron			
Water temp. MIN/MAX °C	5/40			

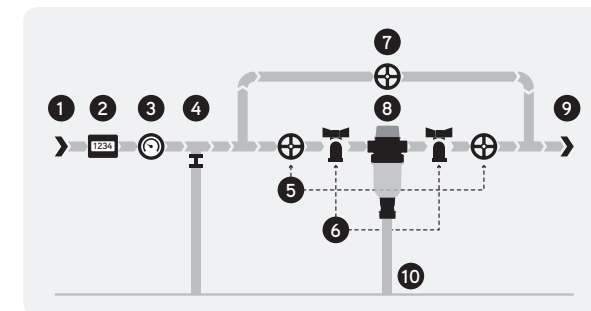
DRAIN FITTING: anti-reflux system in conformity with European Standard UNI EN 1717/2002.

DIMENSIONS

- A** 100 mm
- B** 121 mm
- C** 283 mm
- D** 120 mm



INSTALLATION SCHEME



- 1** Raw water inlet
- 2** General water meter
- 3** Pression reducer
- 4** Backflow
- 5** Shutoff valve
- 6** Withdraw taps
- 7** By-pass valve
- 8** Cosmo 2 filter
- 9** Water outlet
- 10** Filter drain



Two different kind of drain connection are available